

Answers for industry.

Teamcenter Rapid Start

Deploy PDM quickly and cost-effectively

Benefits

- Simple and fast to install, set up and deploy
- Essential PDM capabilities available immediately
- Minimal IT expertise to operate and support
- Realize benefits quickly for a fast return-on-investment
- Start with PDM and grow to PLM

Features

- Single source of product data
- Multi-CAD data management
- Support for popular CAD systems
- Intelligent part numbering
- Data exchange

Summary

The Teamcenter® software Rapid Start configuration delivers the world's most widely implemented product data management (PDM) solution, Teamcenter, preconfigured to leverage common best practices and the expertise of Siemens PLM Software. The Rapid Start configuration gets you up and running with PDM quickly and cost-effectively. By choosing preconfigured capabilities, you can minimize the costs of consulting and maintenance, allowing you to immediately realize the benefits of PDM with confidence that you have a growth path to product lifecycle management (PLM) when you need it.

Teamcenter Rapid Start provides multi-CAD data management capabilities that enable you to effectively and efficiently manage, control and share mechanical CAD data across your entire design and supply chain. Supporting the most popular CAD tools, this environment provides a single view of your product data.

The visualization capabilities of Teamcenter help you extend this into an even broader



collaborative environment. Your cross-functional teams can quickly find, share and re-use product data to help streamline product development.

You can also use Teamcenter Rapid Start to manage everyday tasks and processes with preconfigured best practice workflows for engineering change and product release. Confident that these processes are followed consistently, you can work efficiently and effectively in a collaborative environment to meet design and schedule targets.

Teamcenter Rapid Start

Features *continued*

- Document management
- Simple process management
- Preconfigured roles and functionality
- CAD-neutral visualization
- Collaborative design review tools
- Codeless configuration

Multi-CAD data management

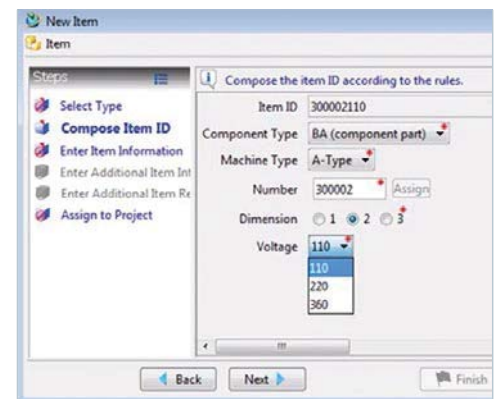
Helping to accelerate product development by promoting design re-use, Teamcenter MCAD data management and multi-CAD support enable design teams to create, manage, and re-use native design data from multiple CAD systems, including NX™ software and Solid Edge® software from Siemens PLM Software, as well as Autocad, Catia, Inventor, Pro/Engineer and SolidWorks, all in a single secure environment.

By using Teamcenter, your design teams don't have to migrate parts from other CAD systems to work together. Using your company's native CAD system, design teams can begin sharing their designs using ISO standard JT files, the industry's most widely-used 3D visualization format. JT is a highly flexible, CAD-neutral format that enables designers to integrate design and visualization from multiple CAD systems into a virtual product model that can be viewed, interrogated and marked-up by other team members, including widely-dispersed participants across the lifecycle.

Teamcenter Rapid Start includes packaged, managed review and collaboration tools to enable data exchange for controlled design reviews without requiring any direct connection to Teamcenter. Leveraging the power of JT, you can digitally validate product configurations without the need to migrate parts to another system.

Teamcenter Rapid Start also includes "Smart Codes" to enable your company to define a standardized way to generate part numbers. Smart Codes allow you to capture important properties (e.g. material type, manufacturing location, finish, end-use, compliance, etc.) that should be used to automatically generate IDs for each part. Your engineers and other users simply apply the Smart Codes "rules" and a consistent part number will be generated as required when a new design or part is being created. Preconfigured options can

include facility code, product family code, sub class and source code. Multiple numbering schemes are supported as well as multiple ways to capture the information, including list pull-downs, combo boxes, radio buttons, logical values and free text fields.



Document management

Teamcenter Rapid Start delivers standard integrations with Microsoft Office and Adobe to extend the use of PDM to users outside of the engineering department. These integrations can be used for creating and updating technical publications, process sheets, customer requirements, manufacturing setups, test specifications, or any other documents you may want to manage. You can even interact with product information and workflow processes directly through the familiar Microsoft Office user interface.

Teamcenter Rapid Start comes with preconfigured reports to support everyday reporting requirements. Reports are based on accurate, up-to-date product data in your PDM system. Preconfigured reports can help you track and optimize your product costs, materials, weights and more.

Whatever type of data you are managing, Teamcenter enables you to easily find the information you need. You can search on business objects and their properties using

either preconfigured or user-defined searches and you can save commonly-used searches so you can run them again later.

Simple process management

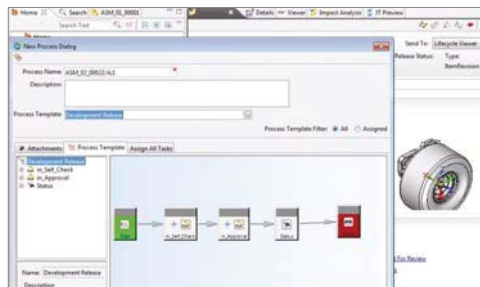
Teamcenter Rapid Start provides you with basic workflow capabilities to streamline product development by managing the part release processes. This helps you more easily:

- Review, comment and approve or reject parts and documents
- Capture audit date and timestamp information
- Manage cross-functional review teams (notifications, quorums, etc.)

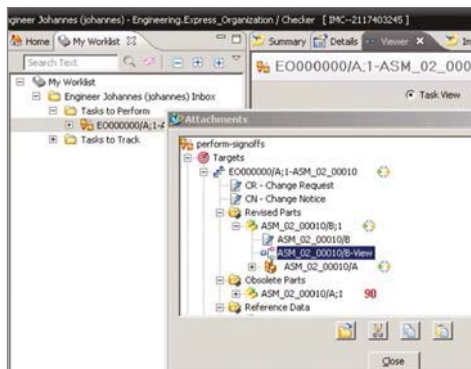
Leveraging the experience Siemens PLM Software has gleaned from thousands of software implementations, Teamcenter Rapid Start comes with a set of preconfigured workflows to help you release your products.

For those situations requiring specific process compliance, you can reconfigure and adapt the Teamcenter Rapid Start standard workflows, or create new ones quickly and easily, without any programming.

Your PDM workflows can also be accessed from within Microsoft Office products, including Microsoft Outlook email. You can synchronize Microsoft Office tasks and activities, and automate a variety of inter-departmental processes such as review and sign-off of specification documentation.



Companies or teams that want to use an integrated and simplified change management process can use the preconfigured capabilities of the engineering order that includes the basic components of a typical engineering change process: change request, change notice and the required workflow process to release or discontinue parts and documents affected by changes. The engineering order also provides quick access to all change-related information including forms to store attributes for the change request and a set of folders to store related documents and parts.



Teamcenter Rapid Start also delivers a configuration management model supporting revision rules, revision status filtering and basic revision effectivity using dates or unit numbers.

Preconfigured roles and responsibilities

Another area of special functionality in Teamcenter Rapid Start is a focus on the tasks you do every day, both as individuals and as a team. Teamcenter Rapid Start offers preconfigured groups and roles that you can use to simplify common tasks. The user interface is tailored to each individual type of user, only showing menu options and applications required for their job. This reduces the user learning curve and improves overall usability.

The standard set of roles supports typical tasks such as issuing an engineering order, reviewing designs, releasing and approving

documents and more. These tasks can be streamlined by using shortcut links in the "I want to" area of the user interface. The tasks are automated by wizards, making them smooth, natural and consistently repeatable for a reliable and efficient process.

There is also an out-of-the-box role targeted at shop floor use cases such as "find parts" and "documents released for manufacturing only." The role helps you view, measure, and print. Typical user roles for the shop floor viewer include inspection, assembly team, machine set-up, and more.

The security model and related information access is an important side of the pre-configured user organization in groups and roles. This means that different roles (approvers, checkers, designers, suppliers) can have different information access, depending on the lifecycle state. This helps ensure that your intellectual property is protected and auditable throughout the complete product lifecycle.

Platform and deployment

The foundation of Teamcenter Rapid Start is Teamcenter, which enables you to take advantage of best-in-class visualization capabilities and deliver visualization, collaboration and design review using JT and a large number of other 2D and 3D file formats. Organizations that work in a

multi-CAD environment can perform analysis on 3D assemblies without requiring access to a CAD system.

Teamcenter Rapid Start comes with pre-configured Teamcenter translation services to automate:

- 2D translation including NX drafting to CGM, HPGL and TIFF; Solid Edge drafting to PDF, DXF or TIFF
- 3D translation, including Solid Edge, NX, NX I-deas, Catia V5, SolidWorks, Inventor, Pro/Engineer to JT; and Solid Edge to IGES, STEP, Parasolid or STL
- Document translation, MS Office to PDF

All Siemens PLM Software translators can be deployed with Teamcenter Rapid Start, which is workflow-driven and creates the translation request based on available translators installed, types of files found as workflow targets, BOM attachments and user preferences.

Follow the path to PLM

With Teamcenter Rapid Start, you can start with what you need now and grow over time. Once you have Teamcenter Rapid Start up and running, you can add on Teamcenter capabilities as you need them. You can follow the proven Teamcenter path to PLM success, targeting key areas of your business to optimize performance.

Contact

Siemens Industry Software
Americas +1 314-264-8499
Europe +44 (0) 1276 413200
Asia-Pacific +852 2230 3308

www.siemens.com/plm

© 2013 Siemens Product Lifecycle Management Software Inc. Siemens and the Siemens logo are registered trademarks of Siemens AG. D-Cubed, Femap, Geolus, GO PLM, I-deas, Insight, JT, NX, Parasolid, Solid Edge, Teamcenter, Tecnomatix and Velocity Series are trademarks or registered trademarks of Siemens Product Lifecycle Management Software Inc. or its subsidiaries in the United States and in other countries. All other logos, trademarks, registered trademarks or service marks used herein are the property of their respective holders.

Y9 34094 5/13 B



abisse

■ NANTES ■ LYON ■ PARIS ■ TOULOUSE

N° Indigo 0820 202 260
0.09€ TTC/mn

siège social
13 rue de la Loire - BP 93403 - 44234 St Sébastien/Loire Cedex
info@abisse.com

www.abisse.com